



MINERALOGY & PETROLOGY MUSEUM

National and Kapodistrian University of Athens

Director: Prof. A. Katerinopoulos

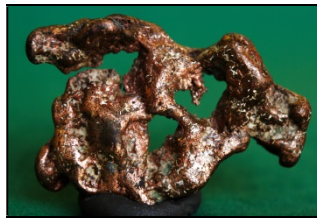
FACULTY OF GEOLOGY AND GEOENVIRONMENT, UNIVERSITY CAMPUS-ZOGRAFOU, GR 15784,
Phone +30 210 727 4112, +30 210 7274180, FAX +30 210 7274883 e-mail: akaterin@geol.uoa.gr

PRESS RELEASE

The Director of the Museum of Mineralogy and Petrology, Professor Athanasios Katerinopoulos invites you to the event:

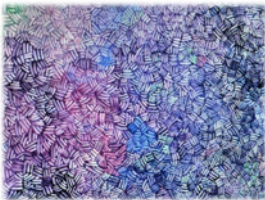
“Sunday Mornings at the Museum of Mineralogy”

on Sundays 3rd, 10th and 17th of April 2016 and from 10:00a.m to 14:00p.m.



Take your whole family and experience amazing educational activities and free tours of the wonderful world of minerals and rocks that will take place on Sunday Mornings at the Museum of Mineralogy. You'll be enchanted by the beauty of gemstones, the fluorescent minerals, the specificity of meteorites and the secrets of volcanoes.

Our little friends will enjoy interactive games as they will experiment on crystal properties, discover the wild beauty of volcanoes and feel the gold rush as the first gold diggers did by sifting the sand to find their own crystals, one of which they'll take back home with them.



Simultaneously, the art exhibition **MinerART** will be held in the premises of the museum, with projects of ten Greek artists, inspired by crystals' structure, colors and luster showcased in the museum.

The scientific staff of the Museum organizes the interactive activities and the educational programs. The art exhibition is curated by the museologist Eftychia Kalohereti.

FREE admission and participation for the whole family.

Museum of Mineralogy & Petrology
Faculty of Geology and Geoenvironment (ground floor), University Campus-Zografou.
Entrance from the main gate on Oulof Palme street.

Early telephone reservations are required in order to participate in the activities, daily from 09:00 to 15:00, at 210-7274112 and 210 - 7274180
e-mail : mineralmuseum@geol.uoa.gr
<http://museums.geol.uoa.gr/mineralogy>
www.facebook.com/MineralogyAndPetrologyMuseum

